

CONTENTS



<i>List Of Advertisers</i>	3
<i>Competition, Visitors & Caddy Fees</i>	5
<i>President's Message</i>	7
<i>Captain's Message</i>	8
<i>Elected Committee</i>	9
<i>Match Committee</i>	10
<i>Handicaps</i>	11
<i>2022 Major Results</i>	12
<i>Club Regulations</i>	13
<i>Club Events</i>	15
<i>Competition Rules</i>	17
<i>New Local Rules</i>	19
<i>Code of Conduct</i>	21
<i>Code of Conduct (Matndatory Penalties)</i>	22
<i>Badili Hardware Pennants Rules</i>	24
<i>Scoring Different Games</i>	27
<i>Weekly Prize Sponsors</i>	36
<i>Lae Golf Motorized Buggy Rules</i>	54
<i>Golf Program</i>	56
<i>Badili Hardware Pennants 2023 Draw</i>	72
<i>2023 Calendar</i>	74
<i>2024 Calendar</i>	75

**UNBREAKABLE
HILUX**



TOUGH & EMOTIONAL

MORE SAFETY FEATURES | BETTER FUEL EFFICIENCY | MORE POWER & TORQUE



www.elamotors.com.pg

Ela Motors
Your First Choice

www.ela-usedcar-png.com

*Head Office 7998 7300 *POM Badili 7998 7566 *POM Waigani 7998 7301 *Lae 7998 7700 *Kokopo 7998 8200 *Madang 7998 7850 *Mt Hagen 7998 7800 *Kimbe 7998 8300
*Lili 7998 8400 *Buka 7998 8600 *Coroka 7998 8270 *Kavieng 7998 8800 *Wewak 7998 8230 *Vanimo 7998 8500 *Moltau 7998 8320

2

Lae Golf Club

LIST OF ADVERTISERS



Badili Hardware	Inside Front Cover
Ela Motors	2
PNG Taiheyo	4
Paradise Breweries	6
Ramu	16
Metier Contractors	23
Lae Golf Club Pro Shop	32
North Coast Aviation	35
Mapai Transport Limited	37
Niugini Electrical	38
Lae International Hotel	41
MJ Electrical	45
BNG Trading	47
BNG Trading.....	50
Bank South Pacific	55
SP Brewery	57
Hornibrook NGI	63
PNG Forest Products Ltd	69
Prima	71
.....
Atlas Steel PNG	Inside Back Cover
Moore Printing	Back Cover



PNG TAIHEIYO CEMENT LIMITED **MANUFACTURER OF PARADISE CEMENT IN PNG** **The Only Cement Factory in PNG**



40KG PREMIUM CEMENT



40KG BAG - PALLET



**JUMBO BAG
(1.5 - 1.7t)**



**BULK TRUCK
(13 - 15t)**

AVAILABLE AT PNG TAIHEIYO YARD, AES INDUSTRIAL PARK, RAVUVU, PNG

- > **JUMBO BAG PARADISE CEMENT**
- > **BULKER CEMENT TRUCK (BCT)**

Contact us for Top Quality Cement:

Lae Head Office & Factory

PH : (675) 478 - 2800
(675) 478 - 7499 | 7197 | 5585

PO Box 4150, Lae City
Morobe Province, 411 PNG

Website : www.pngtaiheiyoo.com
Sales Email : dhacani@pngtaiheiyoo.com
salesanddistribution@pngtaiheiyoo.com

POM AES W/H OFFICE:

Mobile Nos: (675) 7102 - 9754
(675) 7804 - 9807
(675) 7575 - 4484

Portion 2489, Napapa Road, Porebada
Central Novapace, PNG

Website : www.pngtaiheiyoo.com
Sales Email : nhselen@pngtaiheiyoo.com
aes.sales@pngtaiheiyoo.com



PROVIDING THE FOUNDATION FOR STRONGER PNG

FEE STRUCTURE 2023



Fee structure in place to remain. Members are reminded not to employ them from outside the shed and all caddies must have ID and LGC Bib.

The caddie fees are:

18 HOLES - K20

9 HOLES - K15

Fees are used to cover cost of caddies and course security. **Please pay for your caddie in the club house.**

It is the responsibility of all members to ensure the caddies are properly identified and are wearing supplied LGC Bib.

Competition fees:

K30 per member or otherwise advised at specific event

Visitors' fees:

K50 for 9 holes

K100 for 18 holes

K50 per hour for Tennis Court Hire

K50 per hour for Basketball Court

K50 per hour for Bowling green.

Visitors' green fees not applicable to scheduled charity, corporate and trade day events.

Caddies must have LGC Bib and Photo ID.

Without these items they are trespassing on the course.

Visitors fees are to be paid prior to access the LGC facilities.

Fees paid at the Bar.

Non members caught trespassing will be prosecuted.





PRESIDENT'S MESSAGE 2023



Members

We look forward to an exciting 2023, free from restrictions and associated health scares.

Scott Golden has made a lot of welcomed changes over the last 12 months and we expect more improvements over the next few years.

The golf course and greens have been improved greatly and Scott and his grounds team have done wonderful job in presenting the course in a much improved state.

I would also like to welcome Gypsy Santiago to the LGC management team, Gypsy was previously employed at the RPMGC and we are fortunate to engage him here in Lae, he has lots of Golf Club and bar experience, so please make Gypsy feel welcome.

Our new club Captain Francis Sabeniano has taken on the task of all things golf, and will need the support from members as the captain's task is very demanding.

2022 highlight was the inaugural PNG Seniors Open, which was a huge success and congratulations to John McCarthy (Tournament Director) for co-ordinating such a wonderful well received event, with the help of dedicated members who all contributed to a very successful tournament.

The 2023 PNG Senior Open will be bigger and better this year.

A big thank you to Raybon and Jessie Tamegal who have both served on the LGC committee for many years, your valued input has been greatly appreciated.

We welcome Barry Finall (Vice President) who is very keen to grow the club into the future.

Our new Night Driving Range is expected to be a huge success, which will add to the many facilities on offer at the club.

Please ensure as members, we all abide by the golf club rules, also please take time to read our Code of Conduct (Notice Board and in this booklet) we are all stake holders, which intern makes us all responsible for making the Lae Golf Club an enjoyable, pleasant and peaceful sporting club.

Phil Hommelhoff

Lae Golf Club

President



CAPTAIN'S MESSAGE 2023



Hello Members,

Welcome all to another calendar year of Golf for the Lae Golf Club in 2023. In particular, welcome to new members who have joined us this year and also to new corporate businesses who have come on board to support the club.

2022 has seen the golfing calendar in full swing after COVID-19 restrictions were uplifted, the highlight of it was the inaugural PGA Professional Golf "The PNG Senior Open" hosted by the club with 35 senior professionals taking part in the event. A big thank you to the naming right sponsors as well as the supporting sponsors and everyone involved in making it a success story.

We have a full calendar year for 2023 and this will not be possible without the never ending support from all business houses. Thank you for your contribution year in year out. Special mention to our honour board sponsors, Puma Energy, Ela Motors, Dulux PNG and Fincorp.

The club will once again play host to the PGA PNG Senior Open in early August and we are already in the planning stage. I encourage business houses and individuals to support this one of a kind premium Lae Golf Club event.

Finally I would like to emphasis on the club rules, regulation, ethics and the code of conduct for all members to follow so that members and guest can truly enjoy what Lae Golf Club is all about; being a family oriented club.

Happy Golfing

Francis Sabeniano

Club Captain



LAE GOLF CLUB



P.O. Box 164, Lae 411, Papua New Guinea
laegolfclub@global.net.pg

General Manager Scott Golden 472 1353

ELECTED COMMITTEE:

President	Phil Hommelhoff	472 5225
Vice President	Barry Finall	472 1322
Club Captain	Francis Sabeniano	
Treasurer	Logen Rajantran	
Secretary	Nigel Merrick	472 4566
Ladies Captain	Phyonna Gangloff	
House Convenor	Ian Waters	472 9213
	Julie Murray	
Ladies Convenor	Hahire Iomu	473 6200
Tennis/ Bowls Convenor	Harry Kaisa	
Grounds Convenor	Damian Chow	
Special Projects	John McCarthy	472 1104
Admin Convener	Patrick Flinter	
Members Co-ordinator	Vicky Wadham	472 1353/ 1363
	mc@laegolfclub.com.pg	

NON-ELECTED COMMITTEE:

Club Manager	Scott Golden	472 1353/1363
Operations Manager	Gypsy Santiago	472 1353
Bar/Admin Manager	Newman Arita	472 1353/1363
	acctsmgr.laegolfclub@global.net.pg	

LIFE MEMBERS:

Bernard Avery	Jim Birrell	Bob Hunter
William Doherty	Bernie Friel	Jack Johnston
James Seeto MBE	John Keating MBE	Martin McGrath
Sir Horrie Niall	Jim Perry	Ralph Phillips
George Pike	Stuart Scott	Bill Stuart
Brian Stevenson MBE	Jim Rook	George Sellar
Betty Green	Sir Robert Sinclair	Greg Fennell
Stan Warnecke	James Green	
Nigel Merrick MBE	John Buri	

MATCH COMMITTEE



Club Captain	Francis Sabeniano
Vice Captain	Troy Hewson
Ladies Captain	Phyonna Gangloff
Ladies Vice Captain	Carol Schultz
Pennants Coordinator	Chris Leo
Grounds Convener	Damian Chow

RULES AND DISPUTES COMMITTEE:

Francis Sabeniano	Scott Golden
Troy Hewson	Vaughan Schultz
Phyonna Gangloff	

All disputes or protests must be reported to the Club Captain. If he is not available please report to any of the Rules and Disputes Committee. Disputes must be lodged within 15 minutes of the final group leaving the last green.

SPECIAL NOTICE:

To avoid disqualification, make sure that your name, handicap and the type of competition are marked clearly on your card before it is handed in. (For handicap purposes, club badge number is also required).

**ALL CARDS MUST BE PROMPTLY ENTERED INTO THE GOLF KIOSK
ENTERING SCORES IS THE RESPONSIBILITY OF THE PLAYER MARKER.**



HANDICAPS

Club Handicapper

Francis Sabeniano

Mens Grades

A Grade	0 - 12
B Grade	13 - 18
C Grade	19 - 32

- 27 is the maximum for major tournaments and opens

Ladies Divisions All

First Division	0 - 18
Second Division	19 - 45

- 36 is the maximum for major tournaments and opens

The above graded handicaps may change for major open events if the field is restricted.

Cards should be signed by a club official or a club member. New handicaps are determined after the delivery of three (3) Score Cards. HC determined by Golf Manager and at the discretion of the committee as per golf Manager.

All Ambrose events are subject to a maximum Handicap as above.

COUNT BACK

Club Events

Back nine, if tied last 6 holes. Then last 3 holes, if still tied, hole by hole from the 18th.

Major Opens and Club Championships - A play off over 3 holes, 10th, 11th and 18th will commence. Lowest aggregate gross score wins. If still tied, sudden death will be played on the 18th until won.



2022 MAJOR RESULTS



	MEN	LADIES
CLUB CHAMPIONS	Cain Bruce	Carol Schultz
B GRADE CHAMPIONS	David Aisole	Denisse Saragum
C GRADE CHAMPION	Max Gabuogi	
2022 PNG SENIOR OPEN	Peter Senior	
2022 DUNLOP HUON OPEN	Not Contested	
2022 BADILI HARDWARE PENNANTS		Bank South Pacific
2022 KEITH ROYLE	JBB Investments	
2022 ELA MOTORS FOURSOMES	Wille Komba Francis Sabeniano	Jessie Tamegal Shavina Maras
2022 BRIDGESTONE MIXED FOURSOMES	Ekori Jackson	Phyonna Gangloff
2022 PUMA ENERGY MEDAL OF MEDALS	Maxwell Gabuogi	Patty Phalahon
2022 ARTHUR STRACHAN CARSON SHIELD		Daisy Finall



CLUB BY-LAWS & REGULATIONS

CADDIES

- ❖ Members shall not engage caddies except from the caddy master.
- ❖ Caddies fees shall be set by the Match Committee from time to time.
- ❖ No member may purchase golf balls or other equipment from any caddy.

CHILDREN

- ❖ No person under the age of 18 years may be served alcoholic liquor on the club premises.
- ❖ No child under the age of 16 years is permitted in the clubhouse unless accompanied by an adult member.
- ❖ Use of the tennis courts and the golf course by junior members and other children shall be as directed by the Management Committee, the Tennis/Bowls Sub-Committee or the Match Committee, from time to time.
- ❖ The Club accepts no responsibility for any child under the age of 12 years on the golf course or the tennis courts.

UNACCEPTABLE BEHAVIOUR

No member shall cause any disturbance unbecoming of a member, ie yelling, swearing, fighting and/or aggressive behaviour to other members, guests and staff.

DRESS

All members and visitors are required to be neat and tidy in both attire and grooming in all areas of the Club Premises and on the Golf Course. New rules allow for the wearing of specifically designed mock turtleneck golf apparel.

Members are responsible for ensuring that their guests conform to the dress standards. If asked to change attire or leave the club premises by the Manager, or committee member, please do not be offended.

NOT PERMITTED AT ANY TIME ON CLUB PREMISES

Stubbies, football shorts, T-shirts, swim type shorts, football socks, bare feet, thongs. The chewing of Betel nut is prohibited in the Club and on the Golf Course.

GOLF BALLS & EQUIPMENT

These may be purchased from the shop at the Club or from the Manager. No member should purchase these from any caddy or unauthorised person.

GREEN FEES

Any visitor/non-member wishing to play golf must first pay the appropriate green fee.

CLUB BY-LAWS & REGULATIONS



LOCKERS

A limited number of lockers are available for men and ladies. Members wanting a locker must notify the House Convenor, who shall have sole responsibility for the allocation of lockers. Lockers are not transferrable and annual fees apply.

NOTICES

No notice, publication, picture or document shall be displayed within the club precincts without the approval of the House Convenor.

PRACTICE AREA

Practice is permitted only on the designated area bounded by the first, eighth and ninth fairways. Practice is not permitted on the playing course at anytime.

TENNIS COURTS & BOWLING GREEN

These may be used by members and junior members only. All visitors and non-members must pay the hire fee applicable. A system of court and bowling green bookings operates at all times.

VISITORS

Visitors may use the facilities of the clubhouse provided they are in the company of a member who signs them in and accepts responsibility for their dress and conduct.

Visitors may use the golf course and tennis courts, providing they are accompanied by a member and the visitor must pay green fees or court hire fees.

No visitor ordinarily resident in Lae may use the golf course, tennis courts or the clubhouse facilities on more than three occasions in any year. This applies to spouses and other members of a Member's family who are not members of the club.

A visitor who is a member of a golf club affiliated to the Papua New Guinea Golf Association may use the club facilities without payment of any fees.

BAR TRADING HOURS

Club Bar trading hours are between 8 am and 12 midnight. Patrons will have 15 minutes to finish last drinks and vacate the premises shortly thereafter. A special license may be obtained for outside these hours for particular functions.

ALTERATIONS TO PROGRAM

The Match Committee reserves the right to make any alterations to the published golf program as required during the year.

PERSONAL PROPERTY

Personal property of any nature whatsoever that is left on the Club Premises is done so at the owners risk.

DO NOT TAKE VALUABLES ONTO THE GOLF COURSE

CLUB EVENTS



ELA MOTORS FOURSOMES CHAMPIONSHIPS

Played over 36 holes stroke (2 days). The lowest gross score is the winner.

FINCORP MIXED FOURSOMES

Played over 36 holes stroke (2 days). The lowest gross score is the winner.

PUMA ENERGY MONTHLY MEDALS

Will be contested in A, B & C Grade for Men and Division 1 and 2 for Ladies.

PUMA ENERGY MEDAL OF MEDALS

A Medal of Medals will be mens and ladies competition

DULUX CLUB CHAMPIONSHIPS

To be played over 72 holes of individual stroke. The lowest gross score in each grade will be that grade champion and overall lowest gross score will be the CLUB CHAMPION.

***Note - Motorized carts can not be used in Morobe Open, Huon Open and all Club Championships unless you obtain a medical Certificate prior to the event, and inform Club Captain.**

This applies to gross event only. No medical certificate needed for net events.



A part of the NBPOL group

Supporting Papua New Guinea since 1982






















































































































































































































































































































































































































































COMPETITION RULES



1. THE SPIRIT OF THE GAME OF GOLF

- The overriding principal is that consideration should be shown to others on the course at all times.
- The game relies on the integrity of the individual to show consideration for other players and to abide by the Rules.
- In the interest of all competitors, play without delay. No player should play until the group or individual in front, are out of range.
- Players searching for a lost ball should signal the group behind them to play through, when it becomes apparent that the lost ball will not be easily located. Maximum time allowed is five minutes. Do not continue until the group that has been called through is out of range.
- When the play of the hole has been completed, players must leave the putting green without delay. Do not mark cards on or immediately adjacent to the green.
- A player who has incurred a penalty should indicate the fact to their marker or opponent without delay.
- It is every golfer's responsibility to ensure that their group keeps up with the group in front.
- No one should move, talk, stand close by or directly behind the ball or the hole when a golfer is addressing or making a stroke.
- The player who has the honour should be allowed to tee off first, unless this will unduly delay play.



COMPETITION RULES

2. PRIORITY ON THE COURSE

A single player has no standing and should give way to a match of any kind.

Championship matches have the right of way at all times.

Sunday participants in competitions booked on the starter sheet, approved trade and social events have priority; with the exception of major tournaments or Club Championship matches. Players not participating in any of the above must give way.

3. GROUP POSITION IN THE FIELD

If your group fails to keep its place on the course and loses more than one clear fairway on the group in front, you should call the following group through. Continuous slow play may be penalised at the discretion of the Match Committee.

4. RETURNING OF CARDS

It is the responsibility of the player entering a competition to duly complete and enter their score at the Golf Kiosk and return their card in the box provided as soon as the round of golf has been completed.

5. PROOF OF HANDICAP

Visiting golfers must provide written proof of club handicap in any Lae Golf Club competition. Failure to conform will result in disqualification. The onus is on the individual.

6. PRACTICE AREA

Practicing on the course proper, or practicing chipping on any green or bunker EXCEPT on the practice fairway and practice putting green is strictly forbidden.



LOCAL RULES

TO BE READ IN CONJUNCTION WITH THE RULES OF GOLF

1. **OUT OF BOUNDS** - All areas outside the club's boundary fence, tennis court, and the car park. The cement wall around the Golf and Huon club's, marked O.B.
2. **EMBEDDED BALL** - "Through the green" may be lifted without penalty, cleaned and dropped as per Rule 16.
3. **STAKED TREES** - Are to be treated as Ground Under Repair, relief may be obtained as per Rule 16.
4. **G.U.R.** - All **G.U.R.** areas other than Local Rule 3 above, are any areas defined by white pegs or white lines.
5. **STONES - A ball** "Through the green" which comes to rest in such a position that stones interfere with the action of fairly striking at the ball, may be lifted without penalty and dropped as per Rule 16.
6. **WATER HAZARDS** - The right side of the 3rd fairway, with its boundary the outer edge of the stone wall. The lake on the right side of the 9th fairway marked with yellow pegs. On the 18th the same area as the 9th marked with yellow pegs.
7. **LATERAL WATER HAZARDS** - The left hand side of the 18th green marked with red pegs. If your ball enters the hazard between the red pegs your next stroke must be played from the Drop Zone, or from where your last shot was played.
8. **MECHANICAL TYRE TRACKS** - A ball lying in mechanical tyre tracks may be lifted without penalty, cleaned and dropped as per Rule 25.

LOCAL RULES



9. **MUSHROOM, TOADSTOOLS, and FUNGI** growing on the greens may be removed without penalty.
10. **CALL UP HOLES** - Are the 8th, 11th and 17th.
11. **STONES IN BUNKERS** - Are to be treated as removeable obstructions, as per rule 24.
12. **CADDIES** - If you select a caddie from the shed, they will be classified as bag carriers. Under no circumstances are members permitted to bring caddies from outside the caddy shed, nor are visitors allowed to bring their caddy with them.
13. **RUNNERS on GREENS** - A player may remove a runner from the green that is in their line at any time.
14. Use of Laser & GPS distance aids are permitted for all events.
15. If ball lands in a bunker “wash out”, relief may be taken in line with rule 16.1c
16. New Rule: Foot marks in Bunkers



LAE GOLF CLUB INC.

CODE OF CONDUCT FOR MEMBERS

The following policy is for determining fair and reasonable disciplinary action in the event of breaches of an acceptable code of conduct by Members.

The Policy consists of four (4) parts:

1. **Category of Disciplinary Offence** – which qualifies the severity of an infringement;
2. **Mandatory penalties** – which guides the Committee to a fair and consistent penalty based on the severity of the infringement;
3. **Repeat Offence** – which determines the course of action in the event that the member re-offends;
4. **Process** – how a breach is to be reported and reviewed by the Committee.

Categories of Disciplinary Offence

Category 1

Includes but not restricted to:

- Dishonoured cheques > 30 days
- Outstanding membership fees

Category 2

Includes but not restricted to:

- Drunk and disorderly behavior including brawling or loud/offensive language
- Verbal abuse of Staff/Committee
- Failure to obey a lawful directive from LGC Management or Committee
- Breach of visitor sign-in rules
- Repeated breach of dress code
- Unintentional damage to club property
- Giving alcohol to Minors or Caddies
- Playing of gaming machines on credit
- Taking minors into a gaming area
- Aiding or abetting the entry of a Member under suspension
- Driving of a vehicle in such a manner as to cause hazard within the grounds of LGC
- Committing any act in breach of the Licensing or gaming Act
- Deliberate littering on the Course

Category 3

Includes but not restricted to:

- Intentional falsifying score card
- Incitement to cause a breach of this policy
- Issuance of threats by word or deed towards Patrons, Staff or Committee
- Wilful damage of Club property; vandalism, graffiti
- Undermining the authority of Club Manager or Committee
- Malicious damage to Members property
- Abusive criticism of Staff or Committee
- Sexual harassment of Staff
- Unlawful display of a firearm

Category 4

Includes but not restricted to:

- Physical Assault
- Indecent assault or indecent exposure
- Theft or conspiracy to steal
- Bribery or attempted bribery
- Unlawful discharge of a firearm
- Threatening behavior with an offensive weapon

Mandatory Penalties

Category 1 - Suspension pending full payment of debt as stipulated in the Rules of Association

Category 2 - Suspension of up to three (3) months

Category 3 - Suspension of between three (3) and twelve (12) months

Category 4 - Forfeiture of membership and expulsion of not less than twelve (12) months.
Re-nomination required before re-admission.

Repeat Offence

All re-offences will escalate one category with the exception of Category 1.

For example:

A Member who has been disciplined for a Category 2 offence and subsequently reoffends with another Category 2 offence will be disciplined according to Category 3 penalty unless Committee exercises discretion.

Process

1. In accordance with the Rules of Association, a Member must be reported to the Committee for breach of the Code of Conduct. If Incident is witnessed by the Manager or a member of the Committee, the Member will be asked to leave if deemed appropriate and if unwilling to leave will be escorted from the Premises.
2. The Member key is immediately disabled by Club management.
3. The General Manager informs the Club Secretary within two (2) days of the incident.
4. The Club Secretary issues the suspension letter according to the breach of Code of Conduct and advises the Member of the Length of the suspension.
5. A suspended Member is informed that they have seven (7) days to appeal the suspension.
6. If an appeal is received, it is dealt with by the Committee and, depending on the severity of the misconduct, the suspended Member may be asked to appear before a Disciplinary Committee.

Suspension of a member is NOT an arbitrary decision by any individual Committee Member. All Members signed on the membership application form that they will abide by the Club Rules of the Association.



“ Your Building Renovation Specialist “

Ph : 4722 5225

Email : info@meterpng.com

RENOVATIONS, EXTENSIONS, KITCHENS, SECURITY SCREENS, DOORS, FENCING, CORPORATE RE-BRANDING, OFFICE FITOUTS
PROPERTY MAINTENANCE, PLUMBING, TILING, ELECTRICAL, LABOR HIRE, PAINTING AND DECORATING, LIGHT STEEL FABRICATION
ABRASIVE BLAST CLEANING AND INDUSTRIAL COATING APPLICATION

BADILI HARDWARE PENNANTS RULES-2023



- 1: Team Nomination - Team to consist of 14 players (men/ladies) maximum. All squad members must be financial members of the Lae Golf Club and have a current LGC handicap. Team squads to be nominated by the start of the year. Players in each squad may, only be changed if a squad member leaves Lae, or becomes permanently incapacitated and unable to play golf. Changes must be in writing and be approved by the pennants co-ordinator.
- 2: Nomination Fee - The nomination fee for 2023 will be K1100 per team.
- 3: Matches - FIVE (5) Singles matches are to be played each round five (4) men and one (1) lady.
- 4: Rounds - Teams will play each other twice during the year. (10 rounds)
- 5: Tee - Starting tee will be used on a rotation as per draw. All matches will commence at 1:00pm. Captains please ensure that there are no delays.
- 6: Order of play - Captains are to coin toss 10 mins prior to tee-off with the nominated team lists on the board in handicap order lowest to highest marker. The captain winning the toss will decide which position the lady player will occupy.
- 7: Rules - Rules of golf governing match play shall apply.
- 8: Handicaps - Handicaps will be full and the maximum handicap allowed for men 27 and ladies 36.
- 9: Team uniforms - Team uniforms are to include the marquee sponsor's BADILI HARDWARE pennant logo in conjunction with the relevant team CORPORATE logo.



BADILI HARDWARE PENNANTS RULES-2023

- 10: Matches halved at the 18th hole will result in $\frac{1}{2}$ point to each player. There are no extra holes during the preliminary rounds.
- 11: Each tie is worth .5 points. i.e. 1 point per match is available to be won. In the even of players being all square after 18 holes (refer rule 10). The Team with most points at the end of the round will be declared the winner. In the event of teams being tied on points and for and against at the end of the year. The captains involved will select 1 player to represent their team. The play off will be conducted as per normal pennants rules. Starting at hole 1 and normal indexes apply.
- 12: Reserves - The reserve or reserves will be reshuffled with the rest of the team in handicap order lowest to highest. The reserve/ reserves are not to be substituted for the absent team member.
- 13: Disputes - Disputes are to be settled by the match committee members present on the day with the discretion of referring to the rules and disputes committee.
- 14: Amendments - The match committee reserves the right to alter any of the above conditions if necessary.



SINGLE STROKE



Single Stroke or Medal play is the simplest of all the games of golf. The game as played in most professional tournaments requires all strokes to be counted. The player with the lowest gross score wins. Because all strokes are counted and players cannot pick up as in other forms, this is considered to be the toughest type of golf game.

In handicap competitions within clubs, players are usually divided into grades and the lowest nett score in each grade wins. Clubs often award a special trophy to the best gross score on the day.

(Gross Score - Handicap = Nett Score)

SINGLE STROKE SCORING

TIME 9 AM TEE 1st DATE 1/4/92 EVENT Single Stroke

PLAYER A B Jones

CLUB Gales

PLAYER B _____

CLUB _____

HANDICAP	9
HANDICAP	

SIGNATURE OF PLAYER _____
SIGNATURE OF MARKER _____

B Jones
J Hogan

RESULT	
GROSS	82
NETT	73

MEMBERS	PLAYERS		MARKERS		ASSOCIATES	MEMBERS	PLAYERS		MARKERS		ASSOCIATES
	A	B	A	B			A	B	A	B	
METRES	PAR	STROKE INDEX	MATCH INDEX	METRES	PAR	STROKE INDEX	MATCH INDEX	METRES	PAR	STROKE INDEX	MATCH INDEX
462	5	12	18	5	7	3	384	4	3	5	6
460	5	14	8	5	4	4	331	4	11	11	3
171	3	10	12	3	3	16	125	3	16	2	3
238	4	18	3	4	4	18	350	4	9	15	4
370	4	4	14	5	5	2	353	4	7	7	4
200	3	8	6	6	3	13	421	4	1	13	6
395	4	2	10	5	4	9	377	4	5	4	6
363	4	6	1	4	4	11	276	4	17	17	3
509	5	16	16	6	5	11	488	5	13	9	6
3188	PAR	37	41		2713	36					

MEMBERS		PLAYERS		MARKERS		ASSOCIATES		
A	B	A	B	A	B	A	B	
3188	PAR	36	41	IN	OUT	2641	PAR	36
4200	PAR	37	41		OUT	2713	PAR	36
4200	PAR	73	82		TOT	5354	PAR	72
ACN - 73	9				HCP	OLDSZ		
CON -	73				NETT			

FOUR-BALL BEST-BALL STROKE...



Played the same as the single version but you have a partner to assist you.

The best score on each hole is counted since it is played in pairs, the nett score is used on each hole and only the better score is recorded on the card.

Once a player cannot beat his partner's nett score, he should pick up his ball. The stroke index determines on which holes each player is allowed to apply his handicap. For example, a player on 12 handicap can deduct a shot on each of the 12 hardest holes as shown on the stroke index. If both players record the same nett score, then the player who first holed out is marked on the card as scoring.

It is important to remember where handicap strokes apply, so that the best possible result can be achieved. Normally, only two cards are needed, one for each pairing, but both partner's names and handicaps must appear on the card.

A Four-Ball card need only be signed by one marker and one player from each pair.

FOUR-BALL BEST-BALL STROKE SCORING

TIME 9 am TEE 1st DATE 1/4/92 EVENT 4 BBB Stroke

PLAYER A B Jones HANDICAP 9 SIGNATURE OF PLAYER B Jones RESULT GROSS NETT

PLAYER B J Hogan HANDICAP 22 SIGNATURE OF MARKER A Markers RESULT GROSS NETT

CLUB Galles CLUB Galles CLUB Galles

MEMBERS	PLAYERS		MARKERS		ASSOCIATES	MEMBERS		PLAYERS		MARKERS		ASSOCIATES
	A	B	A	B		A	B	A	B	A	B	
METRES	PAR				METRES	PAR				METRES	PAR	
462	5	12	18		449	5	7	3	3	308	4	6
460	5	14	8		313	4	4	9	301	4	11	11
171	3	10	12		122	3	16	18	125	3	15	2
238	4	18	3		221	4	18	16	350	4	9	15
370	4	14	5		342	4	2	5	353	4	7	7
200	3	8	6		155	3	13	13	421	4	1	13
385	4	2	10		355	4	5	7	377	4	5	4
363	4	6	1		330	4	9	11	276	4	17	17
509	5	16	16		485	5	11	1	488	5	13	9
3188	PAR	37			3105	PAR	36		30	PAR	36	

CCR -		HCCAP		QUQU - 72		
ACR - 73	PAR	NETT	TOT	PAR	NETT	
3188	PAR	37	34	2713	PAR	36
6293	PAR	73	64	534	PAR	72



SINGLE STABLEFORD...



This is the most popular game played amongst amateurs as it allows the player to pick up when he has too many shots on any given hole.

Instead of recording a par score on each hole, the player records his score plus a number of points depending on his nett score for the hole.

Two points are allocated if the player has a nett par, three points for a nett birdie and four points for a nett eagle. Even a nett bogey scores a point.

For example, player A receives one shot on a par 4. He has six strokes, which gives a nett bogey. He would score the card as 6/1.

In the interests of faster play, the player should pick the ball up if he cannot score any points on the hole.



Available at LGC Proshop.

PRO Name Brands & the Best in Clothing & Accessories!
QUALITY EMBROIDERY. FAST DELIVERY. COST EFFICIENT



Callaway
GOLF

- ☺ Golf Bags
- ☺ Caps
- ☺ Golf Buggies
- ☺ Towels
- ☺ Polo Shirts
- ☺ Umbrellas

⌘ so much more in store!



Titleist

ODYSSEY
#1 PUTTER IN GOLF



BROSINAN
GOLF

FOOTJOY
#1 GLOVE IN GOLF



FOUR-BALL BEST-BALL STABLEFORD...



This is the team version of single stableford. As with single stableford, the shots are allocated via the stroke index. Only one player can score for each team on a hole, so the points calculated on the hole are based on the best result from the two partners in the team. Where the partners score the same points on a hole, the result is marked down for the player who holes out first.

If a player cannot beat the points score of their partner, they should pick up to help speed up the game. The end result is calculated by adding the stableford points.

(See Single Stableford - page 39 - for the points scoring system)

Only one marker and one player from each team need sign the card.

The highest points score wins the competition.

FOUR-BALL BEST-BALL STABLEFORD SCORING

TIME 9 am TEE 1st DATE 1/4/92 EVENT Four BBB STAB.

PLAYER A B Jones

HANDICAP 9

SIGNATURE OF PLAYER J Hogan

CLUB Gailes

PLAYER B J Hogan

HANDICAP 22

SIGNATURE OF MARKER A Marker

CLUB Gailes

RESULT	NETT
GROSS	46 pts.

MEMBERS		PLAYERS		MARKER'S		ASSOCIATES		MEMBERS		PLAYERS		MARKER'S		ASSOCIATES		
PAR	STROKE INDEX	A	B	A	B	A	B	PAR	STROKE INDEX	A	B	A	B	PAR	STROKE INDEX	
482	5 12 18	B	3 5 1					449	5 7 3	384	4 3 5	3	5	10	300	4 6 8
460	5 14 6	5	2 2					313	4 4 9	331	4 11 11	3	3	11	269	4 14 14
171	3 10 12	3 3 3						122	3 16 18	125	3 15 2	3	2	12	106	3 17 17
238	4 18 3	4 2 4						221	4 18 16	350	4 9 15	4	3	13	312	4 8 10
370	4 4 14	5 2 5						342	4 2 5	353	4 7 7	4	3	14	289	4 10 12
200	3 8 6	3 3 3						155	3 13 13	421	4 1 13	3	5	15	351	4 1 2
385	4 2 10	5 2 7						365	4 5 7	377	4 5 4	2	5	16	345	4 3 6
383	4 6 1	4 3 8						330	4 9 11	276	4 17 17	3	3	17	296	4 15 15
509	5 16 16	2 2 6						405	5 11 1	488	5 15 9	2	6	18	405	5 12 4
3188	PAR 37	22	OUT					2713	36	3105	PAR 36	24	IN		2641	PAR 36
								3188	PAR 37	3188	PAR 37	22	OUT		2713	PAR 36
								6283	PAR 75	6283	PAR 75	46	OUT		5354	PAR 72
								CCR 75		CCR 75		PCR 75		DLGU		
								CCR *		NETT		NETT				

*Need to
Spread Your Wings?...*



NORTH COAST AVIATION

Regular Passenger & Freight Runs
Morobe, Gulf, West New Britain & Vanimo

Charter Services Nationwide
Cargo – Passenger – Exploratory - Medi Vac

Central Reservations
Phone: 472 1755 / 7200 1714
Lae(Nadzab Operations) Operations
Phone: 475 3006 Mob: 7922 3215

AFTER HOURS

726 89843 – Chief Pilot
7270 7082 – Operations

Email: nzb@nca.com.pg

Web Site: <http://www.nca.com.pg>



WEEKLY PRIZE SPONSORS

The Lae Golf Club wishes to acknowledge all sponsors who make our golfing calendar a resounding success.

In particular, we would like to thank the following companies for their generous support of weekly trophies:

Hole	Sponsor
<i>1 for 2 & Straight Drive</i>	<i>Ela Motors</i>
<i>4</i>	<i>Global Internet</i>
<i>8</i>	<i>BSP</i>
<i>11</i>	<i>Lae International Hotel</i>
<i>14</i>	<i>Puma Energy</i>
	<i>Bridgestone</i>
<i>18 for 3/4</i>	<i>Brian Bell</i>
<i>Meat Trays</i>	<i>Boroko Motors / Andersons</i>
<i>Chicken Run</i>	<i>BNG Trading</i>
<i>Joker Draw</i>	<i>Moore Printing</i>
<i>2</i>	<i>Longest Drive – CHM Group</i>
<i>10</i>	<i>Straightest Drive – Ela Motors (not Hole 1 as implied)</i>
<i>17</i>	<i>NTP Bridgestone</i>
<i>Eagles Nest</i>	<i>DSV</i>



MAPAI

TRANSPORT LTD

- Road Transport
- Warehouse Storage
- Yard Storage
- 24 Hour Recovery
- Equipment Hire
- Fully Equipped Workshop



FREE QUOTE, contact us on:
e. information@mapai.com.pg
Locations: Lae, Mt Hagen, Goroka, Port Moresby

www.mapaigroup.com



Niugini Electrical Co. Ltd.

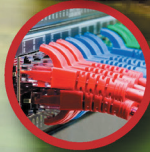
The Electrical Professionals

ELECTRICAL CONTRACTORS

www.niuelec.com.pg

& WHOLESALE

- Manufacturers of Switchboard & Motor Control Systems
- Generator & ATS Systems
- CCTV & Access Control Systems
- High Voltage Specialists
- Motor Rewinding
- Generator Repairs & Hire
- Generator Sales & Service
- Fibre Optic & Telecommunication
- Solar Solutions - Industrial, Commercial, Domestic Specialists
- LED Solar Street Lighting Solutions
- Air Conditioning
- Industrial Electrical Wholesaler
- Equipment Hire



Switchboard
& Control Equipment



Generators & Power Plant Specialists

CONTACT US TODAY!

24 HOURS SERVICE!

LAE ☎ (675) 472 4787 📞 7999 2600 / 7999 2601 ✉ sales@niuelec.com.pg

FOUR-BALL AGGREGATE STABLEFORD...



A team version of single stableford where all scores count on every hole.

Unlike the four-ball best-ball version where players pick up the ball if they cannot beat their partner's points score, each player here must have an allocated score on each hole.

When marking the card, the score and points for each player are marked on the card for every hole on which they score points. The total points score reached by adding the stableford points for the two partners is also recorded for each hole.

The result for the round is then calculated and recorded by adding the total point scores for each hole.

(See Single Stableford - Page 38 - for the points scoring system)

*The highest aggregate points score wins the competition.
Don't forget to check and sign your card.*

FOUR-BALL AGGREGATE STABLEFORD SCORING

TIME 9 am TEE 1st DATE 1/4/92 EVENT Four BBB AGG STAB.

PLAYER A B Jones
 CLUB Gailes
 PLAYER B J Hogan
 CLUB Gailes

HANDICAP 9 SIGNATURE OF PLAYER J Hogan
 HANDICAP 22 SIGNATURE OF MARKER A Marker

RESULT
GROSS
NETT
74 pts.

MEMBERS		PLAYER'S		MARKER'S		ASSOCIATES		MEMBERS		PLAYER'S		MARKER'S		ASSOCIATES										
METRES	PAR	STROKE INDEX	MATCH INDEX	A	B	A	B	PAR	STROKE INDEX	MATCH INDEX	A	B	A	B	PAR	STROKE INDEX	MATCH INDEX							
482	5	12	18	5/2	5	5/3	1	449	5	7	3	384	4	3	5	5/2	5	5/3	10					
460	5	14	8	5/2	4	6/2	2	313	4	9	331	4	11	11	3/3	6	4/3	11	269	4	14	14		
171	3	10	12	4/1	4	3/3	3	122	3	16	118	125	3	15	2	3/2	3	5/1	12	106	3	17	17	
238	4	18	3	4/2	2	7/-	4	221	4	18	16	350	4	9	15	4/3	5	5/2	13	312	4	8	10	
370	4	4	14	5/2	4	6/2	5	342	4	2	5	353	4	7	7	4/3	3	7/-	14	269	4	10	12	
200	3	6	6	3/3	3	6/-	6	155	3	13	13	421	4	1	13	4/3	6	5/3	15	351	4	1	2	
395	4	2	10	5/2	5	5/3	7	355	4	5	7	377	4	4	4	6/1	3	5/2	16	345	4	3	6	
363	4	6	1	4/3	4	6/1	8	330	4	9	11	276	4	17	17	3/3	6	4/3	17	256	4	15	15	
509	5	16	16	7/-	2	6/2	9	426	5	11	1	488	5	13	9	5/2	4	6/2	18	405	5	12	4	
3188	PAR	37		33		OUT		2713	36			3105	PAR	36		41		IN		2641	PAR	36		
								3188	PAR	37		33		OUT		33		OUT		3713	PAR	36		
								6293	PAR	73		74		TOT		74		TOT		5364	PAR	72		
								CCR - 73					H'CAP							CLGU-22				
								CCR -					NETT											



PNG'S LEADING HOTEL



LAE INTERNATIONAL HOTEL

ACCOMMODATION

VILLAS & APARTMENTS
EXECUTIVE & DELUXE SUITES
DELUXE, PREMIUM & SUPERIOR
ROOMS

RESTAURANTS

VANDA FINE DINING
KOKOMO COFFEE SHOP

LOUNGES

SPORTSMAN'S BAR
AERO BAR

CONFERENCE & EVENTS

CONFERENCE CENTRE: 800 PAX
BULDO ROOM: 100 PAX
BOARD ROOM: 36 PAX

RECREATIONAL FACILITIES

GYMNASIUM
SWIMMING POOL

AND MORE

FREE INTERNET WIFI
BUSINESS CENTRE
GIFT SHOP
24 HOURS SECURITY
SPACIOUS CAR PARK
ATM



Telephone: (675) 472 2000 or 472 7000 Fax: (675) 472 2534
Email: business@laeinterhotel.com www.laeinterhotel.com

SINGLE VERSUS PAR...



An unusual game in which the player's main objective is simply "to play to their handicap" on each hole. It is similar to stableford in that a bad score can be discarded and picked up later in the round.

Scores are recorded only as plus (+), minus (-) or halved hole (O).



SINGLE VERSUS PAR...

continued

If we compare it to Stableford scoring:

STABLEFORD POINTS	VERSUS PAR RESULT
3 or greater	(+) Plus
=2	(o) Halved
Less than 2	(-) Minus

Since shots are taken according to the handicap of the player and the stroke index, a player with a shot on a hole needs to score par or better to get a plus (+). One over par will result in a halved hole (0) for the same person and a worse score results in a minus(-).

The scores are recorded by marking down the player's stroke score with the appropriate symbol (+) or (-). If a player is unable to score (+) or (0) on a particular hole, then it is unnecessary to continue the hole and they should pick up their ball and mark the hole as minus (-).

The results for each nine holes are tallied by comparing the (+) and (-) scores as they negate one another. For example, a player with an even number of pluses (+) and minuses (-) would rate as scoring (0) for the nine holes. A player recording five pluses (+) and four minuses (-) would score "+1" for the nine holes, and so on. The result for the round is the sum of the two nine-hole rounds.

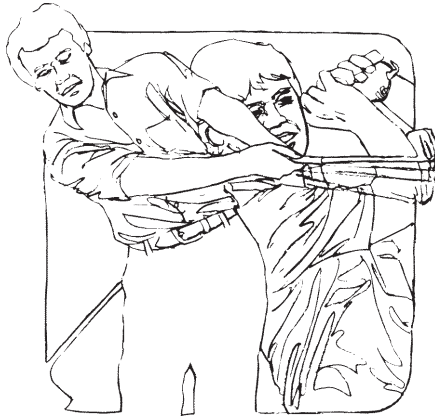
The highest (+) plus score wins the competition. This type of game allows groups to move quickly through a round as only players scoring (+) or (0) need complete a hole.



Electrical | Communications | Security | Fire



AMBROSE



Played in teams of two, three or four, ambrose is a fun event, particularly for players starting out in the game. Because of the nature of the game, the pressure often found in competitions is lessened and the scores are better. Birdies and eagles are suddenly possible for players who might never score the same in other events. The ability to drive long distances off the tee or escape easily from bunkers is not necessary as each player in the team gets to show their skills from identical locations.

Only one stroke score is kept for the entire team, regardless of the number of members. Handicaps are calculated by adding those of all players and dividing the total by; 4 in a two-ball event; 6 in a three-ball event and 8 in a four-ball event. The nett score is calculated by subtracting the exact resulting handicap. So all those 1/4s, 1/6s and 1/8s count.



AMBROSE



After each player plays a shot from the tee, they proceed to their ball. The team captain then decides on the best positioned ball and the other players retrieve their balls and proceed to this spot. This spot is then marked and each player in order places their ball within six inches of the spot, but no nearer the hole, and plays their next shot. This procedure continues irrespective of whether the ball is on the fairway, in the rough or in a hazard, until the play reaches the green.

On the green, the best position is again decided upon and marked. Each player then places their ball within a card length of this spot and has one putt. They must not putt out, but each ball position must again be marked and the procedure repeated until a ball is holed, or a score cannot be bettered.

The card is marked as for a single stroke round and the lowest score wins the competition. It is important to note that all players must have their handicaps on the card. The team captain normally signs as marker, while another player in the team verifies the score by signing as the player.



FOURSOMES...



Foursomes are often called “GRUESOMES” because you seem to spend all day apologising to your partner for the position you’ve just left them in. This team game is played in pairs with only one ball in play. Players alternate between shots after teeing off.

The tee shots also are taken alternately so that one player tees off on all the even numbered holes and the other player the odd ones. In mixed competitions, ladies tee off from their own tee. Most mistakes are made on the putting green when players hole out instead of allowing their partner to play the next putt.

It is an unusual game in that many clubs tend to send groups off in sixes rather than fours because of the speed of the game, since only three balls would be in play.

Played and recorded as if a single stroke event, the handicaps of both players are added and half the total is the team handicap for the day. Halves count in a nett event, so be careful when completing the card.

The order of play is not changed if a player incurs a penalty. A fun event where the team with the lowest score wins.



FOURSOMES...

CANADIAN FOURSOMES

Played on 3/8 combined handicaps, this is similar to foursomes, hence the name. The difference is that players tee off on every hole and then select the best positioned ball to play alternately from there.

AMERICAN FOURSOMES

Played on 1/3 combined handicaps, this is the same as the Canadian but after the tee shot, the players play their partner's ball again and then select one ball to play alternately until holed.

CHAPMAN FOURSOMES

Similar to American foursomes but the second shots on each hole are played with their own ball and then the selection is made. Again, 1/3 combined handicaps is used.

ECLECTIC

A game which takes into account that not all of us play the same hole well every time. By concentrating on reducing "bad shots",

3-putts, and hitting more fairways and greens, your game will improve. One of the great advantages of this exercise during a round is that it takes your mind off your final score and reduces pressure on yourself.

An 18-hole score sheet is kept over a period of weeks or months for every player. As a player improves their score on a hole, their score for the holes is thus recorded as the better score.

The winner is the player with the best "18-hole round" at the end of the period.

FOURSOMES SCORING

TIME 9 am TEE 1st DATE 1/14/92 EVENT Foursomes

PLAYER A B Jones / J Hogan

HANDICAP 15 1/2

SIGNATURE OF PLAYER B Jones

RESULT GROSS NETT

PLAYER B _____
 CLUB _____
 HANDICAP _____

SIGNATURE OF MARKER A Marker

83 67 1/2

MEMBERS	PLAYERS		MARKERS		ASSOCIATES		MEMBERS	PLAYERS		MARKERS		ASSOCIATES					
	A	B	A	B	METRES	PAR		STROKE INDEX	MATCH INDEX	A	B	A	B	METRES	PAR	STROKE INDEX	MATCH INDEX
482	5	12	18		448	5	7	3	384	4	3	5		308	4	6	8
460	5	14	8		310	4	4	8	331	4	11	11		269	4	14	14
171	3	10	12		122	3	16	18	128	3	15	2		106	3	17	17
238	4	18	3		221	4	18	16	350	4	8	15		312	4	8	10
310	4	4	14		342	4	2	5	353	4	7	7		288	4	10	12
200	3	8	6		155	3	13	13	421	4	1	13		351	4	1	2
385	4	2	10		335	4	5	7	377	4	5	4		345	4	3	6
383	4	6	1		330	4	8	11	276	4	17	17		256	4	15	15
599	5	16	16		428	5	11	1	488	5	13	9		405	5	12	4
3188	PAR	37			2713	36			3105	PAR	38			2641	PAR	36	
				40													
				83													
				67 1/2													
				40													
				83													
				67 1/2													
				43													
				40													
				83													
				67 1/2													
				43													
				40													
				83													
				67 1/2													
				43													
				40													
				83													
				67 1/2													
				43													
				40													
				83													
				67 1/2													
				43													
				40													
				83													
				67 1/2													
				43													
				40													
				83													
				67 1/2													
				43													
				40													
				83													
				67 1/2													
				43													
				40													
				83													
				67 1/2													
				43													
				40													
				83													
				67 1/2													
				43													
				40													
				83													
				67 1/2													
				43													
				40													
				83													
				67 1/2													
				43													
				40													
				83													
				67 1/2													
				43													
				40													
				83													
				67 1/2													
				43													
				40													
				83													
				67 1/2													
				43													
				40													
				83													
				67 1/2													
				43													
				40													
				83													
				67 1/2													
				43													
				40													
				83													
				67 1/2													
				43													
				40													
				83													
				67 1/2													
				43													
				40													
				83													
				67 1/2													
				43													
				40													
				83													
				67 1/2													
				43													
				40													
				83													
				67 1/2													
				43													
				40													
				83													
				67 1/2													
				43													
				40													
				83													
				67 1/2													
				43													
				40													
				83													
				67 1/2													
				43													
				40													
				83													
				67 1/2													
				43													
				40													
				83													
				67 1/2													
				43													
				40													
				83													
				67 1/2													
				43													
				40													
				83													
				67 1/2													
				43													
				40													
				83													
				67 1/2													
				43													
				40													
				83													
				67 1/2													
				43													
				40													
				83													
				67 1/2													
				43													
				40													
				83													
				67 1/2													
				43													
				40													
				83													
				67 1/2													
				43													
				40													
				83													
				67 1/2													
				43													
				40													
				83													
				67 1/2													
				43													
				40													
				83													
				67 1/2													
				43													
				40													
				83													
				67 1/2													
				43													
				40													
				83													
				67 1/2													
				43													
				40													
				83													
				67 1/2													
				43													
				40													
				83													
				67 1/2													
				43													
				40													
				83													
				67 1/2													
				43													
				40													
				83													
				67 1/2													
				43													
				40													
				83													
				67 1/2													
				43													
				40													
				83													
				67 1/2													
				43													
				40													
				83													
				67 1/2													
				43													
				40													
				83													
				67 1/2													
				43													
				40													
				83													
				67 1/2													
				43													
				40													
				83													
				67 1/2													
				43													
				40													
				83													
				67 1/2													
				43													
				40													
				83													
				67 1/2													
				43													
				40													
				83													
				67 1/2													
				43													
				40													
				83													
				67 1/2													

LAE GOLF CLUB MOTORIZED BUGGY RULES :



CONDITIONS OF OPERATIONS :

- (a) Any member may purchase and operate a motorized cart on the Lae Golf Club.
- (b) The maintenance of the cart is the responsibility of the owner.
- (c) Insurance of the vehicle in terms of property ownership and public liability remains the responsibility of the owner. The Lae Golf Club will not accept any liability.

RULES OF OPERATION ON LAE GOLF COURSE :

It is important that cart operators are aware that the majority of players are on foot and at all times give all players the courtesy of the Rules of Golf.

- (a) **When approaching a green, all carts should be parked out of line of sight of the following group.**
- (b) **No cart is allowed between the greens and bunkers**
- (c) **No cart should be parked near the green aprons, drivers should endeavour to park at least 5m from the greens as a rule of thumb.**
- (d) **No carts are to park or drive on the greens or tees.**
- (e) **All motorized cart operators must be over 15 years of age.**
- (f) **Only a financial member of L.G.C is permitted to drive a motorised buggy on L.G.C facility**



www.bsp.com.pg

bsp Finance

www.bspfinance.com.pg

bsp life

www.bsplife.com.pg



JANUARY 2023

14	<i>SATURDAY</i>	BSP Opening Day - Single Stableford (BSP)
21	<i>SATURDAY</i>	Monthly Medal - Single Stroke (PUMA)
28	<i>SATURDAY</i>	3 Shambles - Shambles (BRIDGESTONE)



FEBRUARY 2023



03	<i>FRIDAY</i>	Charity Ambrose - Ambrose 4 Ball (KUMUL PETROLEUM)
04	<i>SATURDAY</i>	Single Stableford - Single Stableford (BOC)
11	<i>SATURDAY</i>	Monthly Medal - Single Stroke (PUMA)
12	<i>SUNDAY</i>	Pennants RD1 - Match Play (BADILI HARDWARE)
18	<i>SATURDAY</i>	3 Ball Ambrose - Ambrose 3 Ball (MAPAI TRANSPORT)
25	<i>SUNDAY</i>	Single Stableford - Single Stableford (BRIAN BELL)

MARCH 2023



04	<i>SATURDAY</i>	Monthly Medal - Single Stroke (PUMA)
05	<i>SUNDAY</i>	Pennants RD2 - Match Play (BADILI HARDWARE)
11	<i>SATURDAY</i>	2 Day Event - Single Stableford Ag (BOROKO MOTORS) • Day 1
18	<i>SATURDAY</i>	2 Day Event - Single Stableford Ag (BOROKO MOTORS) • Day 2
25	<i>SATURDAY</i>	Yellow Ball Team Stableford - Aggregate Stableford (MJ ELECTRICALS)

APRIL 2023



01	<i>SATURDAY</i>	NKW RD1 - TBA (NKW HOLDINGS)
02	<i>SUNDAY</i>	NKW RD2 - TBA (NKW HOLDINGS)
07	<i>FRIDAY</i>	GDSS RD1 - 4B Aggregate (GUARD DOG SECURITY SERVICE)
08	<i>SATURDAY</i>	GDSS RD2 - Canadian Foursomes (GUARD DOG SECURITY SERVICE)
09	<i>SUNDAY</i>	GDSS RD3 - Ambrose 2 Ball (GUARD DOG SECURITY SERVICE)
15	<i>SATURDAY</i>	Monthly Medal - Single Stroke (PUMA)
16	<i>SUNDAY</i>	Pennants RD3 - Match Play (BADILI HARDWARE)
21	<i>FRIDAY</i>	Prime Minister's Corporate Challenge - Ambrose 4 Ball (PNG OLYMPIC COMMITTEE)
22	<i>SATURDAY</i>	Single Stableford (TRUKAI)
29	<i>SATURDAY</i>	Single Stableford (<i>Secret Partner</i>) (METIER CONTRACTORS)

MAY 2023



06	<i>SATURDAY</i>	Monthly Medal - Single Stroke (PUMA)
07	<i>SUNDAY</i>	Pennants RD4 - Match Play (BADILI HARDWARE)
10	<i>WEDNESDAY</i>	Swire/ Consort Trade Day - Abrose 4 Ball (SWIRE/ CONSORT)
13	<i>SATURDAY</i>	Club Mixed Foursomes Championship RD1 4somes Mixed (FINCORP)
14	<i>SUNDAY</i>	Club Mixed Foursomes Championship RD2 4somes Mixed (FINCORP)
20	<i>SATURDAY</i>	4 Ball Stableford Multiplier (ATLAS STEEL PNG)
27	<i>SATURDAY</i>	Single Stableford (POSCO DAE-WOO)

JUNE 2023



03	<i>SATURDAY</i>	Monthly Medal - Single Stroke (PUMA)
04	<i>SUNDAY</i>	Pennants RD5 - Match Play (BADILI HARDWARE)
10	<i>SATURDAY</i>	HUON OPEN RD1 - 4BBB Stroke (DUNLOP)
11	<i>SUNDAY</i>	HUON OPEN RD2 - Chapman Foursomes (DUNLOP)
12	<i>MONDAY</i>	HUON OPEN RD3 - Ambrose 2 Ball (DUNLOP)
17	<i>SATURDAY</i>	4BBB Stableford (HORNIBROOK NGI)
24	<i>SATURDAY</i>	2 Ball Medley Ambrose - Ambrose 2 Ball (HUON LOGISTICS)



**STEEL FABRICATION
CRANE & MACHINE HIRE
MOTOR TRANSPORT
PROPERTY DIVISION
BUILDING & BRIDGING**

WE DELIVER

Awilunga Estate, 9 Mile, Lae, Papua New Guinea

Phone: +675 4758601

Email: hngi@hornibrook.com.pg

www.hornibrook.com.pg

JULY 2023



01	<i>SATURDAY</i>	Single Stableford (SVS)
08	<i>SATURDAY</i>	Monthly Medal - Single Stroke (PUMA)
09	<i>SUNDAY</i>	Pennants RD6 - Match Play (BADILI HARDWARE)
15	<i>SATURDAY</i>	2 Ball Ambrose - Ambrose 2 Ball (PARADISE FOODS)
22	<i>SATURDAY</i>	4 Ball Ambrose - Ambrose 4 Ball (RAUMAI 18 LTD)
28	<i>FRIDAY</i>	4 Ball Ambrose - Ambrose 4 Ball (JACOB LUKE FOUNDATION)
29	<i>SATURDAY</i>	Foursomes Championships RD1 (ELA MOTORS)
30	<i>SUNDAY</i>	Foursomes Championships RD2 (ELA MOTORS)

AUGUST 2023



05	<i>SATURDAY</i>	Monthly Medal - Single Stroke (<i>PUMA</i>)
06	<i>SUNDAY</i>	Pennants RD7 - Match Play (<i>BADILI HARDWARE</i>)
12	<i>SATURDAY</i>	3 Ball Ambrose Lord of The Rings (<i>SP BREWERY</i>)
19	<i>SATURDAY</i>	CARSON SHIELD RD1 - Single Stroke Ag (<i>ARTHUR STRACHAN</i>)
20	<i>SUNDAY</i>	CARSON SHIELD RD2 - Single Stroke Ag (<i>ARTHUR STRACHAN</i>)
26	<i>SATURDAY</i>	2 Ball Ambrose - Ambrose 2 Ball (<i>NIUGINI ELECTRICAL</i>)
31	<i>THURSDAY</i>	PNG SENIOR OPEN PROAM - Ambrose 3 Ball (<i>LGC COMMITTEE</i>)

SEPTEMBER 2023



01	<i>FRIDAY</i>	PNG SENIOR OPEN RD 1 - Single Stroke Ag (LGC COMMITTEE)
02	<i>SATURDAY</i>	PNG SENIOR OPEN RD 2 - Single Stroke Ag (LGC COMMITTEE)
03	<i>SUNDAY</i>	PNG SENIOR OPEN RD 3 - Single Stroke Ag (LGC COMMITTEE)
09	<i>SATURDAY</i>	Monthly Medal - Single Stroke (PUMA)
10	<i>SUNDAY</i>	Pennants RD8 - Match Play (BADILI HARDWARE)
15	<i>FRIDAY</i>	4 Ball Ambrose - Ambrose 4 Ball (PACIFIC BREWERY)
16	<i>SATURDAY</i>	4 Ball Ambrose - Ambrose 4 Ball (JBB INVESTMENTS) • Day 1
17	<i>SUNDAY</i>	4 Ball Ambrose - Ambrose 4 Ball (JBB INVESTMENTS) • Day 2
23	<i>SATURDAY</i>	4 BBB Stableford - 4BBB (RAMU AGRI)
30	<i>SATURDAY</i>	2 Ball Shambles - Shambles (TOK STRET CONSULTING)

OCTOBER 2023



07	<i>SATURDAY</i>	Monthly Medal - Single Stroke (PUMA)
08	<i>SUNDAY</i>	Pennants RD9 - Match Play (BADILI HARDWARE)
14	<i>SATURDAY</i>	Club Championships RD. 1 - Single Stroke Ag (DULUX GROUP)
15	<i>SUNDAY</i>	Club Championships RD. 2 - Single Stroke Ag (DULUX GROUP)
21	<i>SATURDAY</i>	Club Championships RD. 3 - Single Stroke Ag (DULUX GROUP)
22	<i>SUNDAY</i>	Club Championships RD. 4 - Single Stroke Ag (DULUX GROUP)
28	<i>SATURDAY</i>	4BBB Stableford - 4BBB (PNG TAIHEYO CEMENT)

NOVEMBER 2023



04	<i>SATURDAY</i>	Monthly Medal - Single Stroke (PUMA)
05	<i>SUNDAY</i>	Pennants RD. 10 FINAL - Match Play (BADILI HARDWARE)
11	<i>SATURDAY</i>	3 Ball Ambrose - Ambrose 3 Ball (JVPNG INVESTMENT)
18	<i>SATURDAY</i>	Single Stableford (PNG MOTORS)
21	<i>TUESDAY</i>	KEITH ROYLE TRADE DAY - Ambrose 4 Ball (JBB INVESTMENTS)
25	<i>SATURDAY</i>	4 Ball Ambrose - Ambrose 4 ball (HASTINGS DEERING)
26	<i>SUNDAY</i>	Alternatives & Bad Girl's Shoot Out - Shoot Out (LGC)

PNGFP

Engineered Wood Products

PNG Forest Products is the industry leader in Engineered Wood Products and has been an invaluable player in building PNG's future for over 60 years. Our extensive range of products for the domestic and export markets includes treated pine timber, plywood, kit homes & pre-fabricated buildings, bridges, decks, girders and kerbing.



Commercial Kit Buildings



Complete Mining Infrastructure



Hydro Power



Bridges & Bridge Decking



Community Infrastructure



Timber Furniture



Commercial & Retail Fitouts



Timber & Ply Manufacturing



Quality Kit Homes

Employing over 1,200 staff, PNGFP is committed to building a better future through sustainable manufacturing practices. All timber is sourced from sustainable pine plantations. The saw milling and manufacturing plants in Bulolo are powered by PNGFP's own sustainable hydro power stations. The combination of sustainable timber resources, processed with sustainable hydro power makes PNGFP'S Engineered Wood Products truly and uniquely 100% green.

www.pngfp.com

DECEMBER 2023



02	<i>SATURDAY</i>	Medal Of Medals - Single Stroke (PUMA)
09	<i>SATURDAY</i>	4 Ball Ambrose - Ambrose 4 Ball (KENDO LIMITED)
16	<i>SATURDAY</i>	Closing Day Stableford - Single Stableford (PNG FOREST PRODUCTS)
23	<i>SATURDAY</i>	Ela Motors - Closed Season - Stableford Single Stableford (ELA MOTORS)
26	<i>TUESDAY</i>	Boxing Day - 4BBB Stableford - 4BBB (ELA MOTORS)
30	<i>SATURDAY</i>	Ela Motors - Closed Season - Stableford Single Stableford (ELA MOTORS)



PRIMA

Tastes Great!



SALES ENQUIRIES

LAE

Phone: 472 1166

Fax: 472 6016

Email: sales@primasg.com.pg

PORT MORESBY

Phone: 325 1916

Fax: 325 1989

Email: pomsales@primasg.com.pg

P.O. Box 1073, LAE, MOROBE PROVINCE 411, PAPUA NEW GUINEA



CORPORATE PENNANTS 2023

ROUND 1

FEBRUARY 12th

MAFIA	V	BSP
BRIDGESTONE	V	MAPAI TRANSPORT
SP BREWERY	V	ELA MOTORS

ROUND 2

MARCH 5th

ELA MOTORS	V	MAPAI TRANSPORT
SP BREWERY	V	BSP
MAFIA	V	BRIDGESTONE

ROUND 3

APRIL 16th

SP BREWERY	V	MAFIA
BSP	V	MAPAI TRANSPORT
ELA MOTORS	V	BRIDGESTONE

ROUND 4

MAY 7th

MAFIA	V	MAPAI TRANSPORT
SP BREWERY	V	BRIDGESTONE
ELA MOTORS	V	BSP

ROUND 5

JUNE 4th

ELA MOTORS	V	MAFIA
SP BREWERY	V	MAPAI TRANSPORT
BSP	V	BRIDGESTONE



CORPORATE PENNANTS 2023

ROUND 6

JULY 9th

BSP	V	MAPAI TRANSPORT
ELA MOTORS	V	BRIDGESTONE
SP BREWERY	V	MAFIA

ROUND 7

AUGUST 6th

BSP	V	BRIDGESTONE
ELA MOTORS	V	MAFIA
SP BREWERY	V	MAPAI TRANSPORT

ROUND 8

SEPTEMBER 10th

SP BREWERY	V	BSP
MAFIA	V	BRIDGESTONE
ELA MOTORS	V	MAPAI TRANSPORT

ROUND 9

OCTOBER 8th

SP BREWERY	V	BRIDGESTONE
ELA MOTORS	V	BSP
MAFIA	V	MAPAI TRANSPORT

ROUND 10

NOVEMBER 5th

BRIDGESTONE	V	MAPAI TRANSPORT
ELA MOTORS	V	SP BREWERY
MAFIA	V	BSP



2023 CALENDAR

JANUARY							FEBRUARY							MARCH						
S	M	T	W	T	F	S	S	M	T	W	T	F	S	S	M	T	W	T	F	S
1	2	3	4	5	6	7			1	2	3	4			1	2	3	4		
8	9	10	11	12	13	14	5	6	7	8	9	10	11	5	6	7	8	9	10	11
15	16	17	18	19	20	21	12	13	14	15	16	17	18	12	13	14	15	16	17	18
22	23	24	25	26	27	28	19	20	21	22	23	24	25	19	20	21	22	23	24	25
29	30	31	26	27	28	26	27	28	29	30	31									

APRIL							MAY							JUNE						
S	M	T	W	T	F	S	S	M	T	W	T	F	S	S	M	T	W	T	F	S
30					1	1	2	3	4	5	6			1	2	3	4			
2	3	4	5	6	7	8	7	8	9	10	11	12	13	5	6	7	8	9	10	11
9	10	11	12	13	14	15	14	15	16	17	18	19	20	12	13	14	15	16	17	18
16	17	18	19	20	21	22	21	22	23	24	25	26	27	19	20	21	22	23	24	25
23	24	25	26	27	28	29	28	29	30	31	26	27	28	29	30					

JULY							AUGUST							SEPTEMBER						
S	M	T	W	T	F	S	S	M	T	W	T	F	S	S	M	T	W	T	F	S
30	31				1	1	2	3	4	5						1	2			
2	3	4	5	6	7	8	6	7	8	9	10	11	12	3	4	5	6	7	8	9
9	10	11	12	13	14	15	13	14	15	16	17	18	19	10	11	12	13	14	15	16
16	17	18	19	20	21	22	20	21	22	23	24	25	26	17	18	19	20	21	22	23
23	24	25	26	27	28	29	27	28	29	30	31	24	25	26	27	28	29	30		

OCTOBER							NOVEMBER							DECEMBER						
S	M	T	W	T	F	S	S	M	T	W	T	F	S	S	M	T	W	T	F	S
1	2	3	4	5	6	7			1	2	3	4	31					1	2	
8	9	10	11	12	13	14	5	6	7	8	9	10	11	3	4	5	6	7	8	9
15	16	17	18	19	20	21	12	13	14	15	16	17	18	10	11	12	13	14	15	16
22	23	24	25	26	27	28	19	20	21	22	23	24	25	17	18	19	20	21	22	23
29	30	31	26	27	28	29	30	24	25	26	27	28	29	30						



2024 CALENDAR

JANUARY							FEBRUARY							MARCH						
S	M	T	W	T	F	S	S	M	T	W	T	F	S	S	M	T	W	T	F	S
	1	2	3	4	5	6				1	2	3	31						1	2
7	8	9	10	11	12	13	4	5	6	7	8	9	10	3	4	5	6	7	8	9
14	15	16	17	18	19	20	11	12	13	14	15	16	17	10	11	12	13	14	15	16
21	22	23	24	25	26	27	18	19	20	21	22	23	24	17	18	19	20	21	22	23
28	29	30	31				25	26	27	28	29			24	25	26	27	28	29	30
APRIL							MAY							JUNE						
S	M	T	W	T	F	S	S	M	T	W	T	F	S	S	M	T	W	T	F	S
	1	2	3	4	5	6				1	2	3	4	30						1
7	8	9	10	11	12	13	5	6	7	8	9	10	11	2	3	4	5	6	7	8
14	15	16	17	18	19	20	12	13	14	15	16	17	18	9	10	11	12	13	14	15
21	22	23	24	25	26	27	19	20	21	22	23	24	25	16	17	18	19	20	21	22
28	29	30					26	27	28	29	30	31		23	24	25	26	27	28	29
JULY							AUGUST							SEPTEMBER						
S	M	T	W	T	F	S	S	M	T	W	T	F	S	S	M	T	W	T	F	S
	1	2	3	4	5	6					1	2	3	1	2	3	4	5	6	7
7	8	9	10	11	12	13	4	5	6	7	8	9	10	8	9	10	11	12	13	14
14	15	16	17	18	19	20	11	12	13	14	15	16	17	15	16	17	18	19	20	21
21	22	23	24	25	26	27	18	19	20	21	22	23	24	22	23	24	25	26	27	28
28	29	30	31				25	26	27	28	29	30	31	29	30					
OCTOBER							NOVEMBER							DECEMBER						
S	M	T	W	T	F	S	S	M	T	W	T	F	S	S	M	T	W	T	F	S
		1	2	3	4	5						1	2	1	2	3	4	5	6	7
6	7	8	9	10	11	12	3	4	5	6	7	8	9	8	9	10	11	12	13	14
13	14	15	16	17	18	19	10	11	12	13	14	15	16	15	16	17	18	19	20	21
20	21	22	23	24	25	26	17	18	19	20	21	22	23	22	23	24	25	26	27	28
27	28	29	30	31			24	25	26	27	28	29	30	29	30	31				

